

The Japan Rubber Futures Weekly Report:

07 Feb 2022 – 11 Feb 2022

Note: Japan Jan PPI higher +0.6% on month, +8.6% year on year, Jan Machine Tool Orders higher at 61.4% on year.

Rubber Futures Report:

Rubber Futures prices closed the week firmer in all major exchanges. Japan OSE July futures were +5% on closing on Thursday as the market closed on Friday for the National Foundation Day. SHFE and INE rubber prices were both +4% and +5.4% respectively after returning from the Chinese New Year holidays. SGX SICOM rubber was up marginally +0.7% from light fresh buying. Rubber prices had been trading higher in the past 2 weeks amid a tighter physical market and in an anticipation for stronger global demand for vehicles as more countries opened their borders. Trading volume was generally light and some profit taking seen on Friday afternoon after SHFE warehouse rubber stockpile was reported +2,169 tonnes and INE stockpile was +3,024 tonnes. On global news, expectation of the Fed more aggressive rate hikes caused Wall Street stocks to fall sharply. St. Louis Fed James Bullard said the Fed may hike 1% by July and may hike rates in between meetings. US Jan CPI hit a 40-year high at 7.5%. Tension remains high at the Ukraine border as Russia holds drills in Belarus. US security advisor Sullivan said Russia likely to invade Ukraine next week.

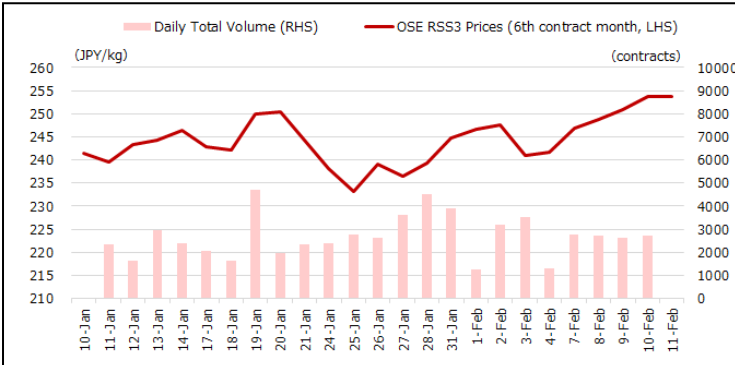
OSE RSS3	Last (JPY)	Net	SHFE/INE	Last (CNY)	Net	SICOM TSR20	Last (USC)	Net	TFEX	Last (THB)	Net
Feb 22	237.5	+4.8	SCR/RSS May22	14,655	+560	Mar 22	178.1	+2.2	RSS3 Jun 22	68.55	+1.4
Mar 22	240.6	+9.0	SCR/RSS Sep22	14,850	+550	Apr 22	178.2	+1.6	RSS3 Jul 22	68.70	+1.35
Apr 22	242.9	+9.1	Total Vol.	1,107,460	-	May 22	179.1	+1.3	JRF Jun 22	249.0	+7.3
May 22	246.9	+11.4	Total OI	339,979	-1	Jun 22	179.9	+1.4	JRF Jul 22	252.3	+7.3
Jun 22	250.4	+12.6	INE TSR Apr 22	11,945	+610	Jul 22	180.4	+1.1	ICEX Last (INR)	Net	
Jul 22	253.8	+12.2	INE TSR May 22	12,025	+600	Aug 22	181.1	+1.0	RSS4 Mar 22	16,815	0
Total Vol.	10,826	-2,348	Total Vol.	181,083	-	Total Vol.	33,621	+25,842	MCX Last (INR)	Net	
Total OI	9,248	-47	Total OI	64,696	+5,873	Total OI	54,358	+2,398	RSS4 Feb 22	16,482	-368

Source: JPX

Source: SHFE, INE

Source: SGX

Source: TFEX, ICEX, MCX



Source: JPX

Important Data / Stock levels	Last	Net
Japan OSE Rubber Stocks (ton, 31 Jan)	8,312	-256
Shanghai SHFE Rubber Stocks (ton, 11 Feb)	248,005	+2,169
Shanghai INE Rubber Stocks (ton, 11 Feb)	88,623	+3,024
China Vehicle Total Sales (unit, 31 Dec)	2,785,918	+264,327
China Passenger Car Sales (unit, 31 Dec)	2,421,558	+229,605
China Commercial Car Sales (unit, 31 Dec)	364,360	+34,722
US Unemployment Rate (% Jan)	4.0	+0.1
US Non-Farm Payroll (Jan)	467,000	-43,000
Japan Unemployment Rate (% Dec)	2.7	-0.1
Japan Manufacturing PMI (Jan)	55.4	+1.1
Japan Tankan Large Manufacturing (4Q)	+18	+0
China Manufacturing PMI (Jan)	50.1	-0.2
China GDP 4Q (%)	+4.0	-0.9

Source: JPX, SHFE, Bloomberg

FOREX	Last	Net
USD/JPY	115.42	+0.16
EUR/USD	1.1350	-0.0099
GBP/USD	1.3564	+0.0033
USD/CHF	0.9259	+0.0003
AUD/USD	0.7137	+0.0065
USD/CNY	6.3546	-0.0066
USD/INR	75.3788	+0.6825
USD/SGD	1.3471	+0.0013
USD/MYR	4.1897	+0.0090
USD/THB	32.738	-0.242
USD/IDR	14,347	-33
USD/VND	22,695	+32

Source: Bloomberg

Stock Index	Last	Net
NK225 Japan	27,696.08	+256.09
TOPIX Japan	1,962.61	+32.05
Dow Jones US	34,738.06	-351.68
S&P 500 US	4,418.64	-81.89
Nasdaq US	13,791.16	-306.85
CSI 300 China	4,601.40	+37.63
Shanghai China	3,462.95	+101.51
HSI Hong Kong	24,906.66	+333.37
STI Singapore	3,428.95	+97.54
KLCI Malaysia	1,578.89	+56.13
SET Thailand	1,699.20	+24.98
IDX Indonesia	6,815.61	+84.22
VSE Vietnam	1,501.71	+22.75

Source: JPX, Bloomberg

JPX Derivatives	Last	Net
JPX NK225 Mar 22	27,700	+290
JPX TOPIX Mar 22	1,966.0	+36.0
JPX NK 400 Mar 22	17,705	+335
JPX TSE REIT Mar 22	1,923.0	+5.0
JPX NK 225 VI Feb 22	21.50	-0.45
JPX JGB 10 Year Mar 22	150.07	-0.27
JPX Gold 1 Kg Dec 22	6,808	+141
JPX Platinum Dec 22	3,787	+8
JPX Silver Dec 22	86.5	+3.5
JPX Palladium Dec 22	8,700	+100
JPX TSR20 Jun 22	208.0	+7.9
JPX Corn Jan 22	42,720	+1,660
JPX Dubai Crude Oil Jul 22	60,650	+670

Source: JPX

Rubber Trading – Technical Analysis OSE July Rubber futures:

OSE active July futures closed at +12.2 or +5% at 253.8 on Thursday. Prices are likely to open lower on Monday since Friday was a public holiday in Japan as rubber prices fell in the other exchanges. July futures is likely trade JPY 4-5 lower on Mon. July support is seen at 245.2 followed by 239.6 and resistance is likely to be at 257.5 and 261.0. 14 days RSI is at 60.2%. Market sentiment remains positive and short-term uptrend is intact unless prices fall and close below 230.0.

Rubber Trading – SGX SICOM April Futures Technical Analysis:

SICOM rubber futures had been trading higher in the past 1.5 weeks after the CNY holidays. SICOM May futures closed +1.3 cent at 179.1, as there was fresh buying all week but profit taking set in on Friday. May futures support is expected at 175.5 followed by 173.5 & resistance at 183.5 and 185.5. 14 days RSI is 52.6%. There are considerable resistance 184-186 areas. Prices remain on the up-trend and periodic profit taking is expected but prices must stay above 172.0 to keep prices positive.



Source: Bloomberg



Source: Bloomberg

Contact us

Kensuke Yazu

Derivatives Business Development
Osaka Exchange, Inc.

Tel: +81 (0) 50 3377 8645

Email: deri-w1@jpx.co.jp

Disclaimer

The copy rights for this document belong to Japan Exchange Group ("JPX") and part or all of this document shall not be reproduced, republished, uploaded, linked, posted, transmitted, adapted, copied, translated, modified, edited or otherwise displayed or distributed in any manner without JPX's prior consent.

This document is not an offer or solicitation to buy or sell, nor financial advice or recommendation for any investment product. This document is for general circulation of overview of JPX's Futures Markets only. It does not address the specific investment objectives, financial situation or particular needs of any person. Advice should be sought from a financial adviser regarding the suitability of any investment product before investing or adopting any investment strategies. Use of and/or reliance on this document is entirely at the reader's own risk. Investment products are subject to significant investment risks, including the possible loss of the principal amount invested. Past performance of investment products is not indicative of their future performance. Examples provided are for illustrative purposes only.

The information contained in this document has been compiled by a designated person/company from sources believed to be reliable, but no representation or warranty, express or implied, is made by JPX and the person/company as to its fairness, accuracy, completeness or correctness. JPX shall not be responsible or liable, whether under contract, tort including negligence or otherwise, for any loss or damage of any kind, whether direct, indirect or consequential losses, or other economic loss of any kind, including without limitation loss of profit, loss of reputation and loss of opportunity suffered or incurred by any person due to any omission, error, inaccuracy, incompleteness, or otherwise, any reliance on such information, or arising from and/or in connection with this document.

The information in this document is subject to change without notice and is provided in good faith but without legal responsibility or liability